

## Organization Identity and Practical Information



**Your Life-saving Partner**

### **Our identity and services**

Rachvipa MRI Center is one of ASEAN's leading medical imaging service providers. We are driven by professionals committed to deliver outstanding imaging result with uncompromising standards. We provide MRI and CT diagnosis, screening and health check-up service for hospitals, doctors, patients, or any individual who decide that clarity over his or her own health condition can be life-saving.

### **Company Root**

Our founders were a team of professionals in the field of diagnosis radiology: radiologists, technologists, and administrators; each with more than 20 years of experiences. Amidst strong cost-cutting and price competition among private imaging businesses, we began our service in 2008, positioning ourselves apart as the leader in quality and setting our vision to become the best in the region. We recruited board-certified fellowship-trained sub-specialty radiologists and top technologists in the field, and invested in cutting-edge MRI technology from SIEMENS. We designed and built our whole facility from the ground up with the sole purpose of delivering the best imaging service possible.

After less than a year, we had earned immense trust and reputations from the medical community. As a private imaging center, we delivered unprecedented accuracy, safety, and comfort; through the utilization of innovative technology and spacious, state-of-the-art facility. We became the first MRI center in Thailand to be accredited ISO 9001:2008 in our first year of service.

We keep expanding our personnel force to serve the ever increasing demand for our service. In 2011, we were drove to invest in the second Siemens MRI machine. Despite the sheer volume of patients and clients, we continued to deliver excellent services in the timeliest manner. To affirm our commitment to quality, in 2014, we have become the first MRI center in the Southeast Asia region to be accredited by Joint Commission International (JCI), one of the most respected standards in the international medical community.

## **Core Values**

Rachvipa is committed to deliver the most accurate, safe, and timely imaging service possible. As company, as professionals, and as human beings, we take pride in being able to give back to the community we live in, with the quality of our healthcare service.

### **Accuracy**

Our team consisted of top professionals: crème de la crème of the nation in terms of MRI. Every day, our subspecialized radiologists and technologists do what they do best in an optimal working environment, utilizing state-of-the-art equipment to deliver our clients with outstanding image and interpretation quality only such combination of humans and machines could achieve.

### **Safety**

Each step, each tiny detail of our care is executed with meticulous attention. Detailed screening, history taking, and patient identification: we established a system to check and double check every process. Medications are administered under close professional supervision. A general practitioner is always on service in our facility, just for a dedicated purpose of ensuring the safety of care. Strict protocols are in place to activate prompt response to medical emergency such as cerebral hemorrhage and CPR, and even non-medical ones. Our network of health care institutions stand ready to accept our referral at any time of service. Our equipment in every level from MRI coils to fire alarms are thoroughly and consistently checked and maintained. To confirm our commitment to safety, we are accredited by Joint Commission International (JCI) Ambulatory Care Standards, one of the most prestigious healthcare standard in the world in 2014.

### **Timeliness**

MRI and CT scans' demand in Thailand's public healthcare far exceed what the government can provide. In large hospitals, a queue could be as long as 6 months

for an MRI scan. We understand that to people with diseases life-changing disease such as cancers, or even a speculation of one, every second does matter. Thus, we take great pride in being able to offer decisive information to such clients with our timely service. We generally could secure an appointment for any client within a couple of days, or even hours for more emergency cases.

### **Comparative advantage of Rachvipa**

We set out to be the best in what we do, and work hard every day to live up to that title.

The caliber of our equipment and professionals are equivalent to those of the top medical schools and private hospitals of the region. But as an imaging institution, not a whole hospital, we can focus our resource on only one aspect of healthcare: Diagnosis Imaging.

Moreover, during decisive moment of critical condition such as cancer, time is also of utmost importance. The time spent waiting in a month-long queue at a hospital, could be cut to mere hours at Rachvipa. We understand that in individuals afflicted with life-threatening conditions such as cancers or even suspected that they might have such diseases, every second matters.

Compare to other private imaging service, we are clearly distinguished. While companies in private imaging industry focus on price and other business incentives, we decided to become patient-oriented. Our priority, our commitment belongs to the patients: the true customers that we serve. Our commitment to deliver uncompromising standards of care reflects in every aspect our service.

Together with quality, we are also able to provide peerless comfort, convenience, and warmth to our clients. Our hospitality personnel is professionally trained, and consistently mindful of the clients' needs, medical and non-medical. Our facility and service flow ensure that every visit is as comfortable, safe, and private as possible.

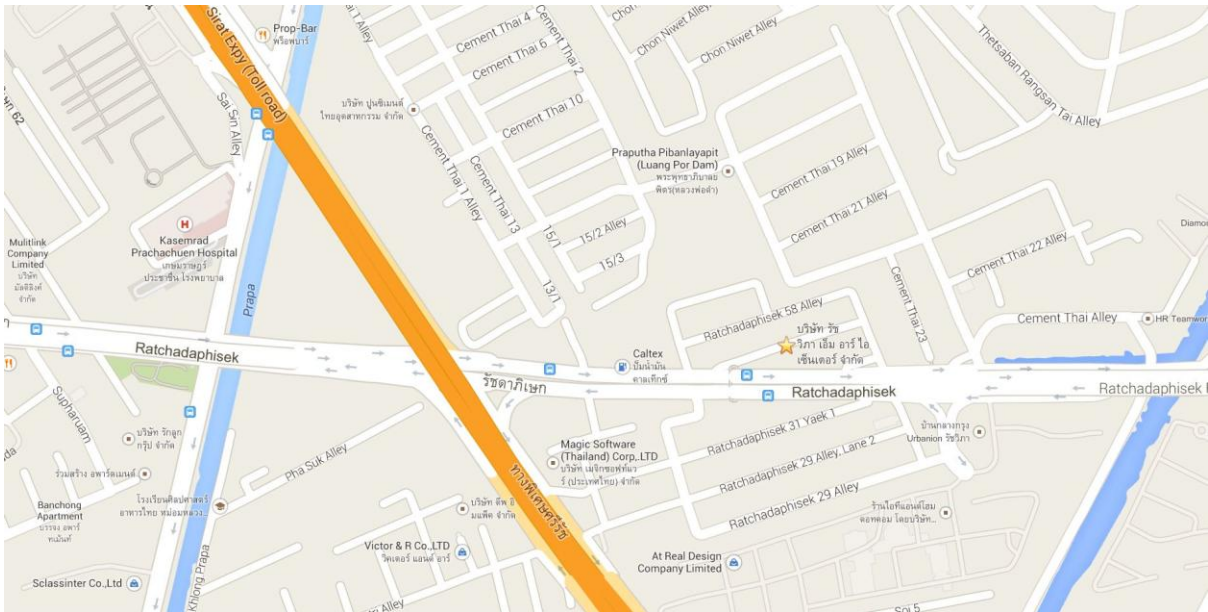
## MRI Check-up Programs

Apart from the usual confirmative diagnosis service, we also provide MRI check-up programs for health-conscious individuals with specific needs or symptoms. Such customers could come directly to our facility without having to meet any outside physician beforehand. That is because our check-up programs are completed with in-house physicians' consultant service and referral recommendation. Some of the check-up procedures we can perform are listed below:

Organs region	Organ/Symptoms/Disease	Scanning
<b>Brain</b>		
	Headache	MRI brain
	Impaired memory	MRI brain
	Stroke	MRI+MRA brain/carotid artery
<b>Abdomen</b>		
	Liver diseases (Cirrhosis, Hepatitis virus, liver mass, etc. )	MRI liver
	+Spleen	MRI Spleen
	+Pancreas	MRI Pancreas
<b>Pelvis</b>		
	Ovary and Uterus (Ovarian cyst, chocolate cyst, cancers etc.)	MRI lower abdomen
<b>Whole Abdomen</b>		Whole abdomen MRI screening
<b>Spine</b>		
	<b>Neck</b> pain, upper limb numbness, spondylosis	MRI cervical spine
	<b>Lower back</b> pain, sciatica, herniated discs	MRI Lumbar spine
<b>Joint</b>		
	Knee injury, osteoarthritis	MRI knee
	Shoulder pain/ frozen shoulder	MRI shoulder
<b>Whole body</b>	<b>Total body check-up</b>	<b>Whole Body MRI Screening</b> (***special package)
<b>Bone</b>	Bone tumor	MRI bone scan

Contact: +66-2-158-1088 Website: rachvipamri.com

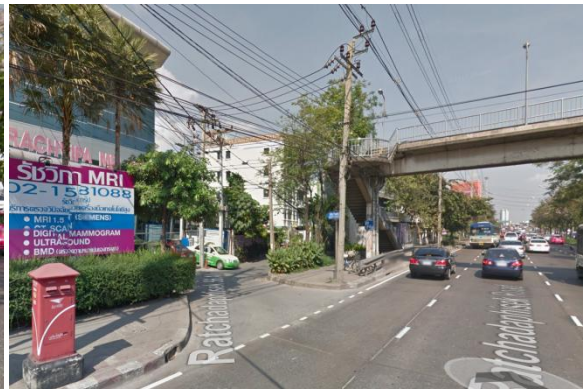
Address: 9 Ratchadapisek 56, Chatuchak, Bangkok, Thailand 10900



Map URL: <https://goo.gl/maps/vjG5C>

**Direction:** If you take the highway (Sirat Expressway) from downtown, head for “Chaengwattana”, but take the left exit 2-08 for “Ratchadapisek Road”. Drive down the ramp then turn left out on to the road, and immediately make a U-turn under the bridge.





Head straight until you see Caltex fuel station then keep looking for our building on the left. We are located just inside the 56<sup>th</sup> alley of Ratchadapisek road.

